

# 2007/2020 Bilgin Yachts / Euro Marine Group

## MY CORONA

**LOA: 33.5m, 110ft**

**BEAM: 6.7m, 22ft**

**Draft: 2.0m, 6.5ft**

**1 Year manufacturer warranty provided by Euro Marine Group (stem to stern)**

**GUESTS: 5 Staterooms, 10 Guests**  
**Upper and Lower Master, 1 VIP, 1 Double, 1 Twin**  
**CREW: 3 Cabins, 5 Crew**

**For further information contact:**

**Craig Bonnett - [cb@euromarinegroup.com](mailto:cb@euromarinegroup.com)**

# Introduction

**Welcome to this one of a kind 33.5m raised pilot house yacht. She was stripped to her bare hull and completely rebuilt from top to bottom, stem to stern. Her systems are new (plumbing, electrical, generators, hydraulics, black and grey water tanks, air conditioning, helm and navigation equipment). The hull was repainted inside and out. The entire interior is brand new and custom designed for this yacht using only the highest quality materials and accessories found on super yachts. This includes American Walnut throughout the interior, Gessi fixtures in the bathrooms, Miele appliances, as well as unseen details such as sound and temperature insulation. No expense was spared. You and your crew will appreciate unique features such as the two full size side by side refrigerator/freezers aboard when on extended cruises. The owner gets to choose from two full beam cabins for the master (one on the main deck and the other on the lower deck) and with five guest cabins this yacht comfortably sleeps 10 guests and 5 crew. With a captain and 4 crew one is able to provide a high level of service aboard.**











DAY



NIGHT















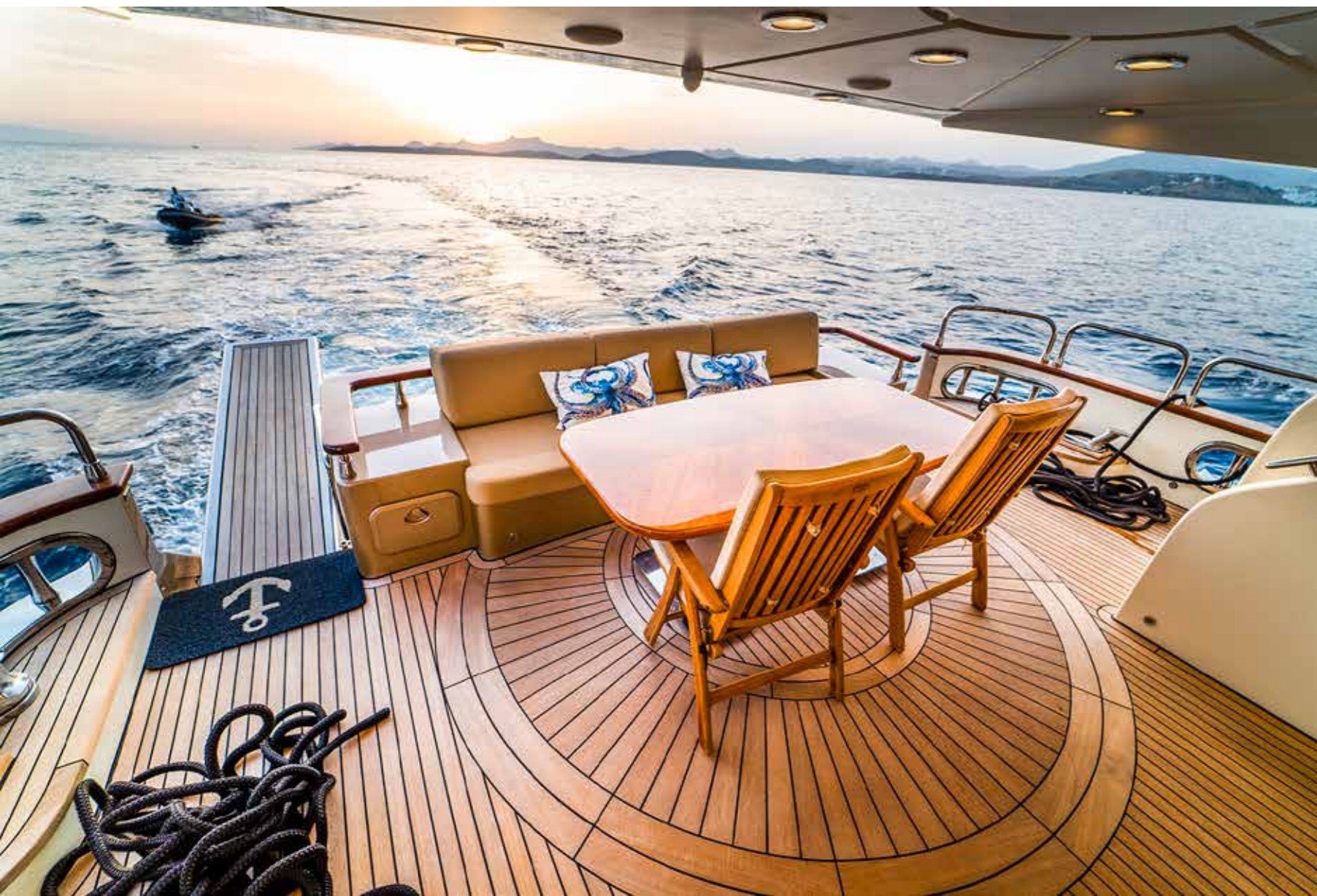


# Flybridge





# Aft Deck







Forward Deck Lounge





Salon



# Dining Room







Master On Main Deck



# Master On Main Deck





# Master On Main Deck







# Master Cabin







# Master Cabin







# VIP Cabin





# Guest Double Cabin





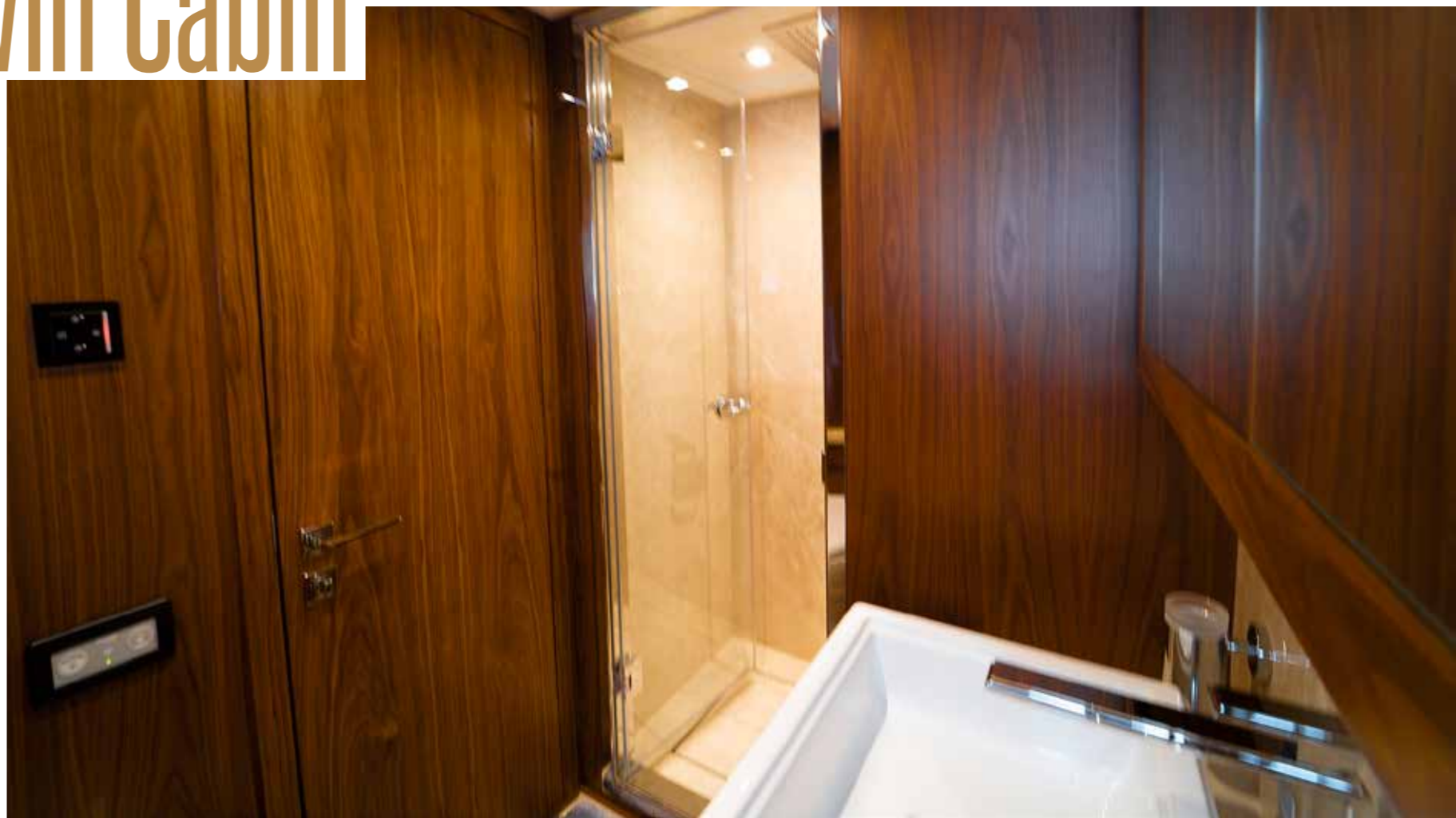
# Guest Twin Cabin







Guest Twin Cabin





# Main Deck Hall





# Lower Deck Stairs





# Lower Deck Hall







**Captain's Cabin**



# Crew Mess



# Aft Crew Bunks







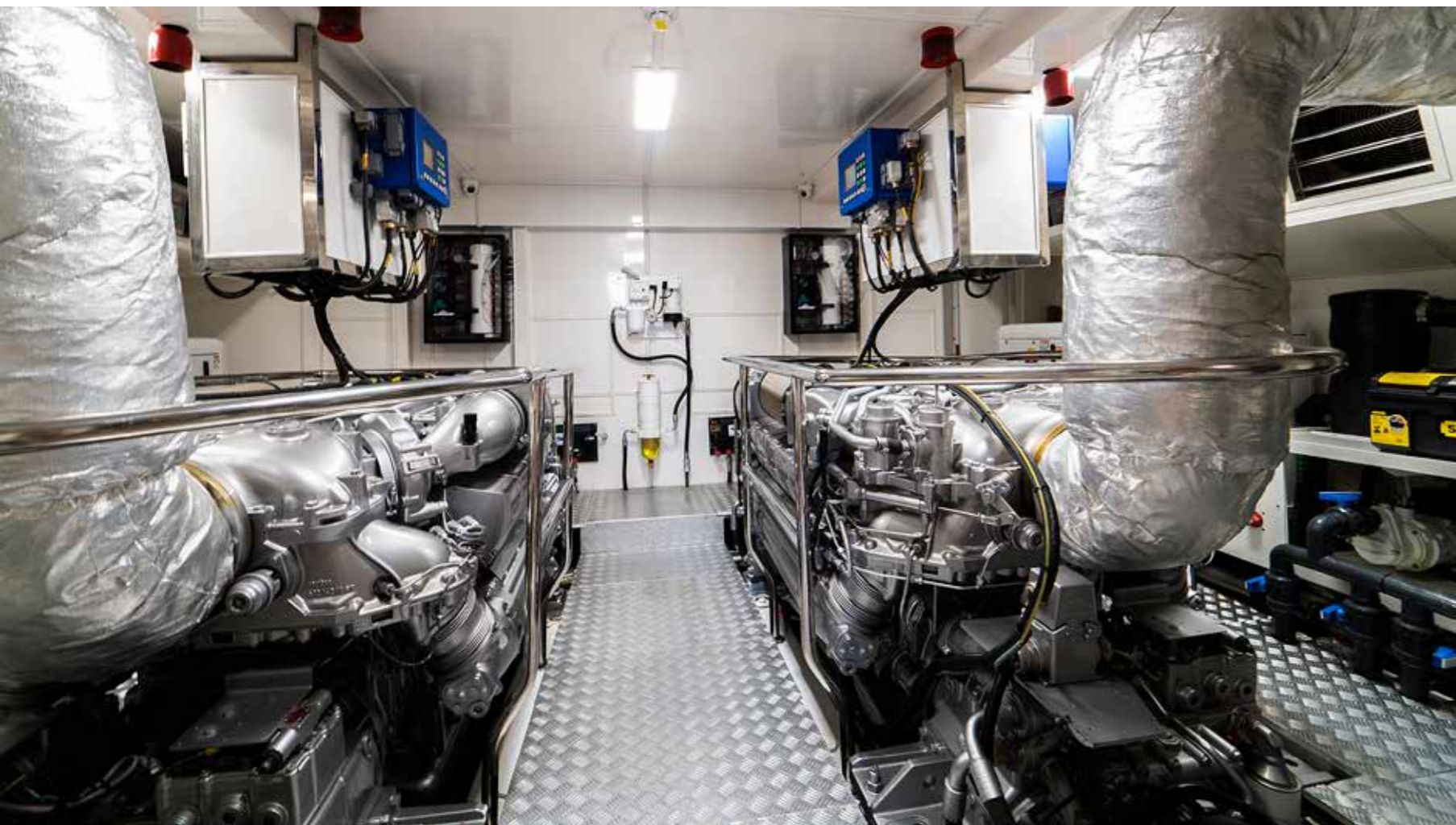
# Bridge







# Engine Room





# Engine Room

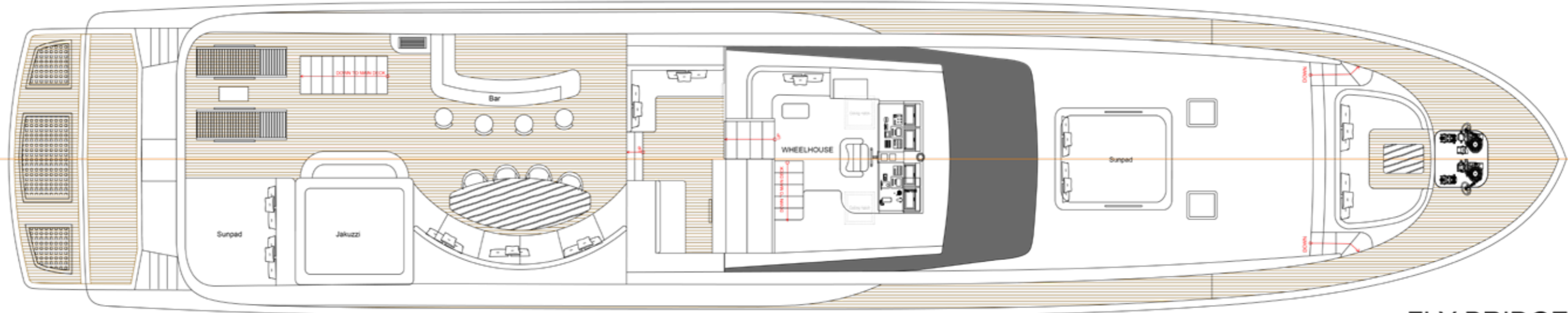




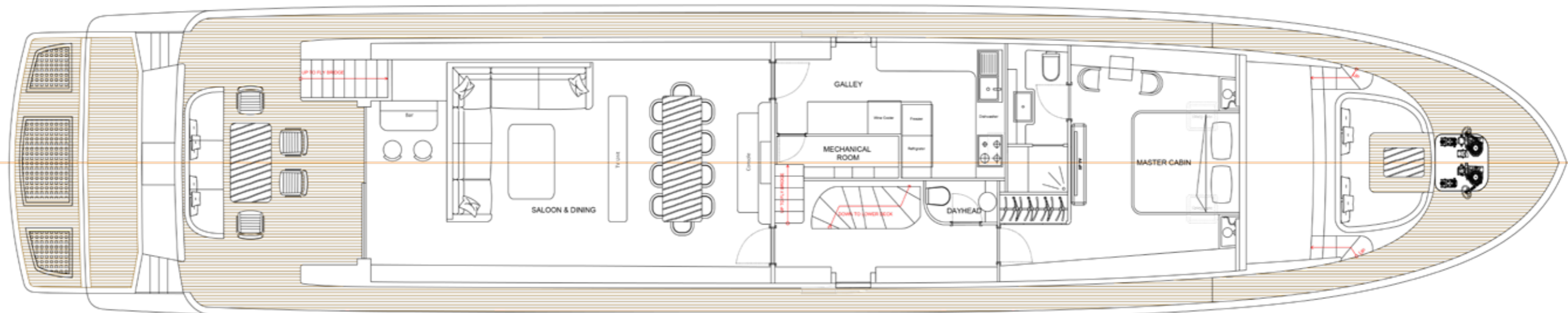
# General Arrangement



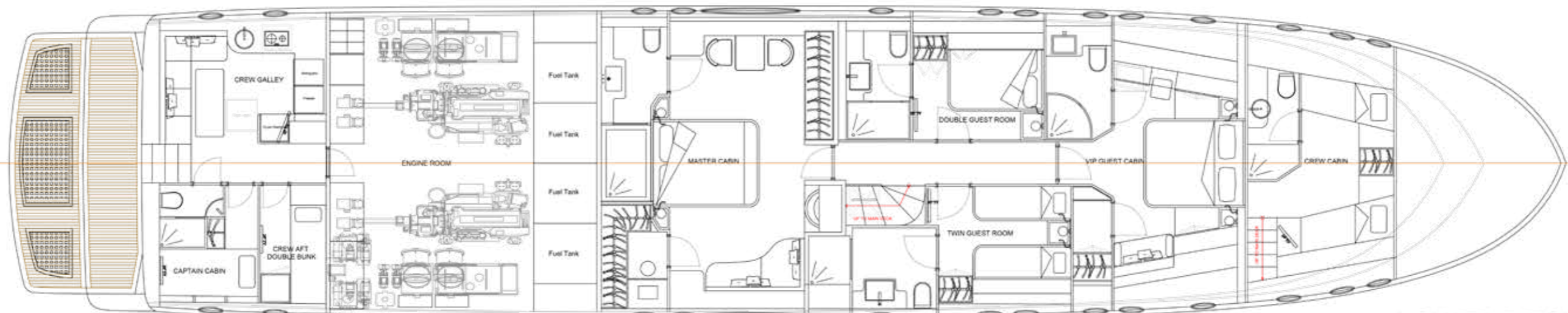




FLY BRIDGE



MAIN DECK



LOWER DECK



# Specifications

**LOA:** 33.5m, 110ft  
**Beam:** 6.7m, 22ft  
**Draft:** 2.0m, 6.5ft  
**Cruise Speed:** 12 knots @ 1400RPM  
**Max Speed:** 17knots @ 2400RPM  
**Generators:** 2 x Kohler 28EFOZD 28Kw Each  
**Port Hours:** 490h  
**Starboard Hours:** 510h

**Year:** Hull Built 2007 / 2020  
**Builder:** Bilgin / Euro Marine Group  
**Type:** Raised Pilot House, Motor Yacht  
**Location:** Mediterranean

**Hull Material:** Composite / Wood  
**Fuel Capacity:** 11.000lt  
**Fresh Water Capacity:** 3.000lt  
**Black Water Capacity:** 1.600lt  
**Grey Water Capacity:** 1.600lt  
**Flag:** Delaware, USA

**Engines:** 2 x Diesel MTU10V2000M93, 1500HP  
**Port Hours:** 210 after full rebuild  
**Starboard Hours:** 210 after full rebuild  
**Staterooms:** 5  
**Sleeps:** 10  
**Crew Berths:** 5  
**Heads:** 8



# Electrical System

**Electrical Panels: SCHNEIDER**  
**Inverter: MASTERVOLT**  
**Battery Charger: MASTERVOLT**

# Navigation

**Compass: RAYMARINE**  
**Log: RAYMARINE**  
**Depth Sounder: RAYMARINE**  
**Repeater: RAYMARINE**  
**Autopilot: RAYMARINE**  
**Radar: RAYMARINE**  
**Wind, Speed, Direction: RAYMARINE**  
**Plotter: RAYMARINE**  
**GPS: RAYMARINE**  
**AIS: RAYMARINE**

# Communication

**Radio: RAYMARINE**  
**VHF: RAYMARINE**  
**Computer, Printer, Fax: HP**

# Entertainment

**TV/DVD: 14x SAMSUNG LED TV**  
**Satellite: KVH TRACVISION M9**  
**Audio: VIVALDI ENT SYSTEM**  
**Lighting Automation: Eelectron**



# Domestic Appliances

**Refrigerator: 2 Full Size MIELE**

**Freezer: 2 Full Size MIELE**

**Oven: MIELE**

**Microwave: MIELE**

**Coffee Machine: MIELE**

**Dishwasher: MIELE**

**Washing Machine: MIELE**

**Dryer: MIELE**

**Wine Cooler: MIELE**

**Ice Maker: VITRIFRIGO**

# Deck Equipment

**Anchor Windlass: 2**

**Davits: OPACMARE**

**Passarella: OPACMARE**

**Capstans: LOWRANCE**

**TENDER: 4,9m BRIG TENDER with 100Hp YAMAHA OUT-BOARD**

# Safety Equipment

**Fire Fighting System: CO2 for Engine Room**

**Fans and Dampers: CEM**

**Security Cameras: 7 x RAYMARINE**

**Bilge Pumps: 7 X 24V**

**Main Bilge Pump: 050-inox 230M Self Priming Pump**

**Main Fire Pump: 050-inox 230M Self Priming Pump**

**Lightning Protection System**

# Auxiliary Equipment

**Bow Thruster: Sleipner, Side Power SP550TC**

**Stern Thruster: Sleipner, Side Power SP550TC**

**Water Maker: 2 X IDROMAR 180lt/hr systems**

**Stabilizers: ABT TRAC 300 Series**

**Air Conditioning: Marincold MC-180-H/C, 200,000BTU**

**Toilet System: 2 x Raritan With TOTO Washlets & 6x Tecma Breeze**

**Grey Water Tank Overboard: MCA 75-230M Bronze Self Priming Macerator Pump**

**B/W Tank Overboard: MCA 75-24V Bronze Self Priming Macerator Pump**

**Hydrophore (Fresh Water Pumps): GDE-MG/3 Double water pressure system (with 2 MG-INOX 24v+230M), delivery max 90+90 l/min pressure max 5 bar**

**Ultrasonic Anti Fouling: Globatech Ultrasonic Bio Fouling Protection System**

**Navigation Lights: LOPOLIGHT**

**Underwater Lights: Entire perimeter of yacht - 33 x LUMITEC Sea BlazeX**



## Exterior

With a massive flybridge featuring large seating areas, a bar, Jacuzzi, and plenty of space for sunbathing this deck is a great space for entertaining as well as relaxing. The fore deck features a large seating area with a table and the aft deck also offers a large seating area with a table.

## Salon

The large salon features a bar at the aft followed by a large sofa and a dining room table that comfortably seats 10.

## Master Stateroom on the Main Deck

The main deck stateroom is full beam with huge windows bringing the outside in. It features a California King bed generous closet space and en-suite bath. For many owners this will be used as the master instead of the master on the lower deck.

## Master Stateroom on the Lower Deck

The lower deck master features large windows on the port and starboard sides, a desk on the aft wall as well as a small table on the port side, and lounge seating on the starboard side. There is a walk-in closet as well as a large closet in the cabin itself providing best in class storage. The en-suite bath features a very large walk in shower.

## Twin Guest Stateroom

This lower deck cabin features one double bed, ample storage, entertainment system, and a large en-suite bath.

## Double Guest Stateroom

This lower deck cabin features two single beds, ample storage, entertainment system, and a large en-suite bath.

## VIP Stateroom

This lower deck cabin is full beam with extra seating, a walk-in closet, and an en-suite bath. The television in this cabin drops out of the ceiling.

## Crew Cabins

The crew space on this motor yacht is large and is split between a cabin at the front of the yacht and the aft. The forward cabin accessed from the main deck features 2 beds and a bath with a separate shower. The aft crew space features a spacious crew mess where the washer and dryer are located and two crew cabins (a single bunk for the captain in one and a double bunk in the other).